

Project Name: _____
Item Number: _____
Quantity: _____
Length: _____



INFINITY™ Support:

- ☐ 1/2" Clear Tempered Glass
Contact factory for additional options

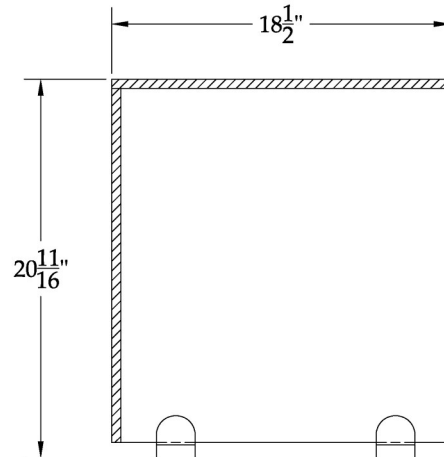
Glass:

- ☐ 1/2" Glass - 72" max. Span
Contact factory for spans exceeding max.

Mounting Options:

Some mounting options may not be available on some cantilevered/counter substrate combinations. Refer to mounting cut-sheet or contact factory for additional information.

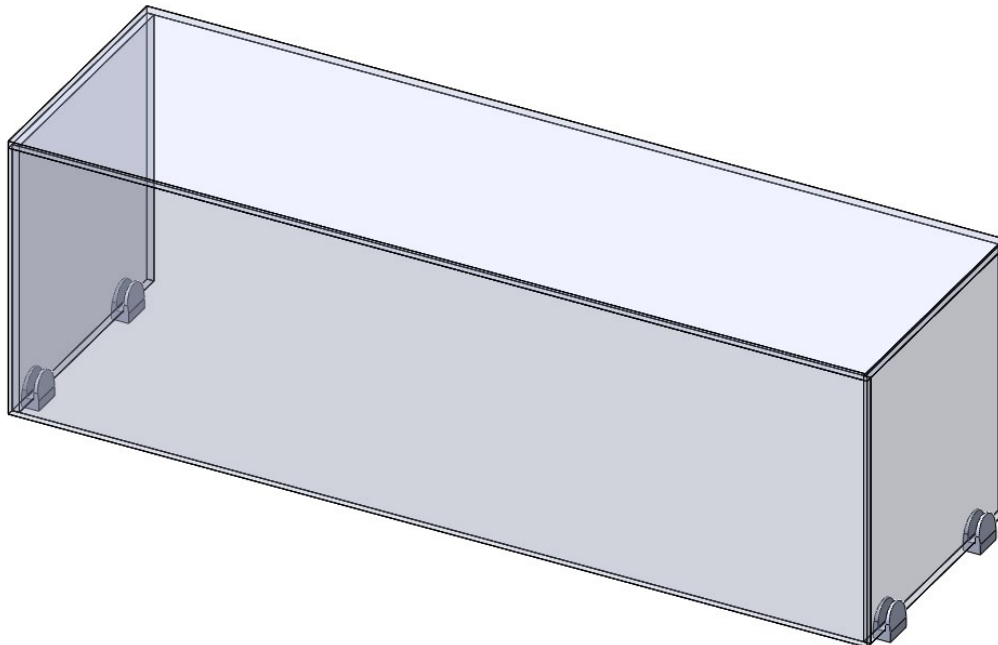
- ☐ 640-Z Above Counter Surface Mount (Standard)
☐ 640-FB Above Counter Surface Mount with Stainless Flat Bar



Advise Counter
Thickness and Material

End Panels:

As required by current NSF / ANSI 2 standards, all food shields will be quoted with side end panels unless customer requests otherwise. Standards available upon request.



Specifications for reference only and may be changed without notice. All orders require approved shop drawings prior to release to production. Products are drawn & built to meet NSF Standard 2. It is the responsibility of the customer to ensure product meets local health board standards.

Web: www.pmg-inc.com
Email: info@pmg-inc.com
Phone: 1-800-251-5800
Fax: 1-800-251-2515



Printed in the USA (01/2016)
Premier Metal & Glass Ventures, Inc.
1835 MacArthur Blvd., NW
Atlanta, Ga 30318