

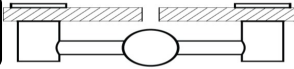
Project Name: _____

Item Number: _____

Quantity: _____

Length: _____

FUSION™



CHOICE™ Support:

- ☐ 1" OD Stainless Steel
Contact factory for additional tubing options

NSF Listed Finishes:

- ☐ Brushed (#4)
☐ Polished (#8) Stainless
☐ Flat Black
☐ Wrinkle Black
☐ Unlimited Powder Coats, specify:
 RAL#: _____ or PMS#: _____

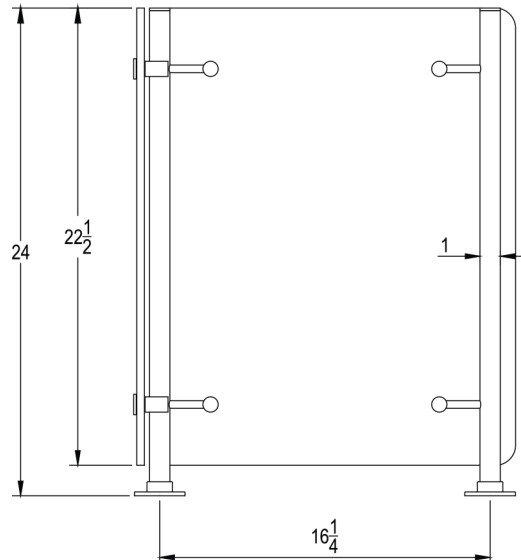
Glass:

- ☐ 1/4" Glass - 48" max. Span
☐ 3/8" Glass - 60" max. Span
 Contact factory for spans exceeding max.

End Panels:

- ☐ Both (Std.) ☐ Right Only
☐ None ☐ Left Only

As required by current NSF / ANSI 2 standards, all food shields will be quoted with side end panels unless customer requests otherwise. Standards available upon request.



Advise Counter
Thickness and Material

Mounting Options:

Some mounting options may not be available on some cantilevered/counter substrate combinations. Refer to mounting cut-sheet or contact factory for additional information.

- ☐ 641-1 Above Counter Surface Mount
☐ 640B-2/1 Above Counter Surface Mount with Stainless Flange Cover
☐ 644B-3/1 Narrow Above Counter Surface Mount with Stainless Flange Cover
☐ 223 Through Counter Mount (Standard when rear legs are not possible)
☐ Other: _____

Electrical Components:

Lights Only

- ☐ Ultra-Slim™ Fluorescent 4100CCT* (Std.)
☐ Ultra-Slim™ LED Display Light
 (ideal over refrigerated product areas)

Heat Strip Only

- ☐ Hatco GRNM Narrow Heat Strip (Std.)
 (Other Hatco heat strips available)

Heat / Light Combo

- ☐ Hatco GRNM Narrow Heat Strip and
 Ultra-Slim™ Fluorescent 4100CCT* (Std.)
 (Other Hatco heat/combo units available)

Please see electrical cut sheet for additional options and wiring diagram.

Specifications for reference only and may be changed without notice. All orders require approved shop drawings prior to release to production. Products are drawn & built to meet NSF Standard 2. It is the responsibility of the customer to ensure product meets local health board standards.

Web: www.pmg-inc.com
 Email: info@pmg-inc.com
 Phone: 1-800-251-5800
 Fax: 1-800-251-2515



Printed in the USA (09/2017)
 Premier Metal & Glass Ventures, Inc.
 1835 MacArthur Blvd., NW
 Atlanta, Ga 30318